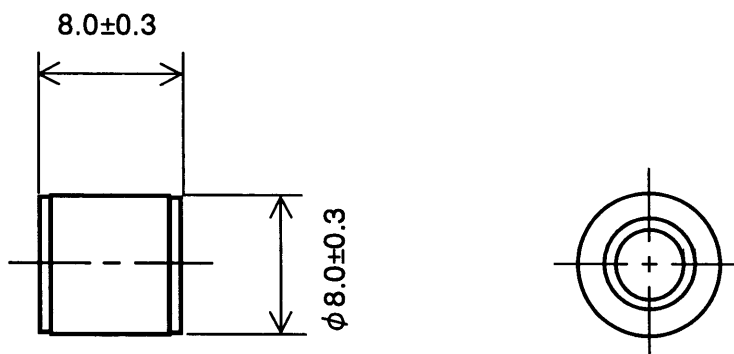
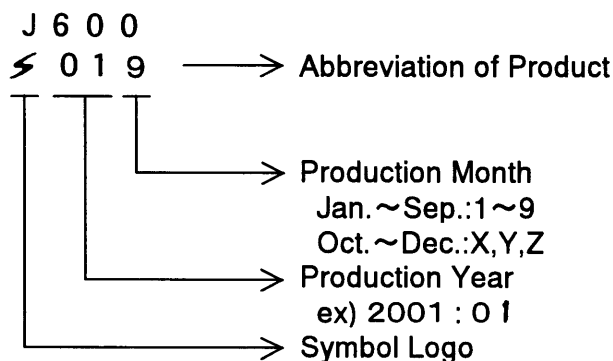


Construction and dimensions



Marking



Electrical Characteristics

1. DC Spark-over Voltage	500V/s	600V±20%
2. Impulse Spark-over Voltage	100V/μs 1kV/μs	≤950V ≤1100V
3. Insulation Resistance	250V DC	≥10,000MΩ
4. Capacitance	1MHz	≤0.7pF
5. DC Holdover Voltage	52V, 200mA	≤150ms
6. Impulse Life	10/1000 μs, 500A	500times
7. Impulse Discharge Current	8/20 μs, 20kA * 8/20 μs, 40kA	10times 1time
8. AC Discharge Current	50Hz 1sec, 20A 50Hz 9Cycles, 50A 50Hz 1sec, 40A	10times 1time 1time

※ After Test of Item 6,7 and 8

1) DC Spark-over Voltage	500V/s	450~750V
2) Impulse Spark-over Voltage	1kV/μs	≤1650V
3) Insulation Resistance	250V DC	≥100MΩ

\* The performance of the arrester will be maintained, without being mechanically destroyed.

DSN	L.P.E.G	Sep.04.'01	UNIT	mm		TITLE	CERAMIC ARRESTER Y08J-600A
DWG	K. Maeno	Sep.04.'01	SCALE			DWG No.	T-010060C01
CHK	Y. Uwano	Sep.04.'01				REV	