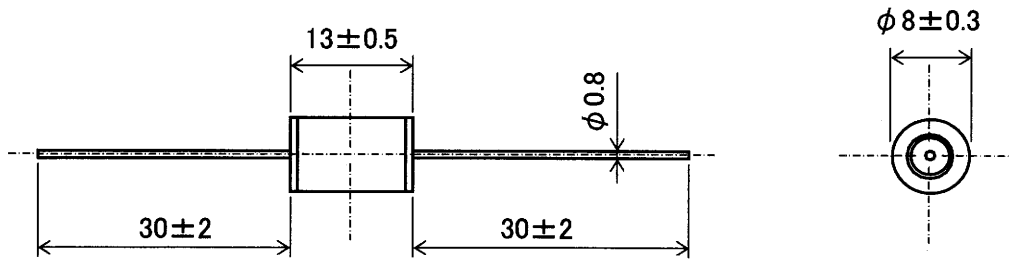
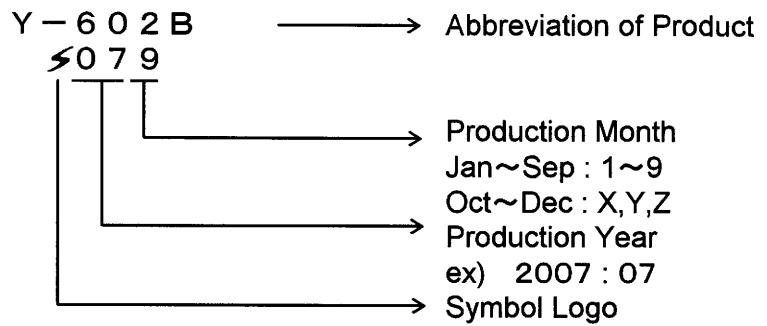


Construction and dimensions



Marking



Electrical Characteristics

1. DC Spark-over Voltage	5kV/s	6,000V±20%
2. Impulse Spark-over Voltage	100V/μs	≦8,000V
3. Insulation Resistance	DC 1000V	≧10,000MΩ
4. Capacitance	1MHz	≧1.0pF
5. Impulse Life	10/1000 μs, 500A	10times
6. Impulse Discharge Current	8/20 μs, 1kA	+5,-5times
	8/20 μs, 5kA	1time
7. AC Discharge Current	50Hz 1A, 1sec	10times
	50Hz, 5A	9cycles

※ After Test of Item 5,6 and 7

1) DC Spark-over Voltage	5kV/s	6,000V±50%
2) Impulse Spark-over Voltage	100V/μs	≧12,000V
3) Insulation Resistance	DC 1000V	≧1MΩ

DSN	S.E.D	Dec.07.'94	UNIT	mm		TITLE	CERAMIC ARRESTER	
DWG	<i>S. Ito</i>	Sep.25.'07	SCALE	\times			Y-602B	
CHK	<i>T. Umano</i>	Sep.25.'07				DWG No.	C4-21108	
							REV	a