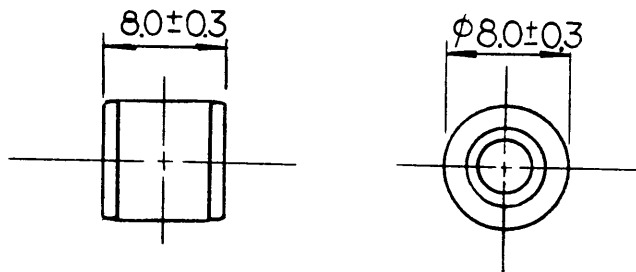


External Dimensions



Marking

J 2 5 0 A ——— Abbreviation of Product
 S 9 7 6
 ——— Production Month
 Jan. ~ Sep. : 1 ~ 9
 Oct. ~ Dec. : X, Y, Z
 ——— Production Year
 ex) 1997 : 97
 ——— Symbol Logo

*Position
 Optional

Electrical Characteristics

1. DC Spark-over Voltage	100V/s(Light Condition)	250V ± 20%
2. Impulse Spark-over Voltage	1,000V/μs(Dark Condition)	≤ 1,000V
3. Insulation Resistance	DC 100V	≥ 1,000MΩ
4. Capacitance	1 MHz	≤ 1.5pF
5. Impulse Discharge Current	8/20 μs, 10Times	+15kA 5times -15kA 5times
6. AC Discharge Current	1s, 50Hz, 10times	20A

※ After Test of item 5 and 6

DC Spark-over Voltage	100V/s(Light Condition)	250V ± 30%
Impulse Spark-over Voltage	1,000V/μs(Dark Condition)	≤ 1,200V
Insulation Resistance	DC 100V	≥ 100MΩ

DSN	L.P.E.S.	.	UNIT		TITLE
DWG	R. Hashimoto	Jun. 6. '97	mm	DWG NO.	CERAMIC ARRESTER Y08J-250A
CHK	Y. Igasaki	Jun. 6. '97	SCALE	T-970220 CO 1	